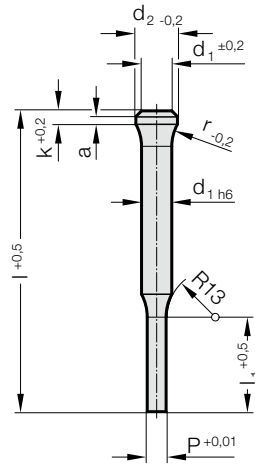


PUNCH WITH TAPERED HEAD, STEPPED, ROUND, ~DIN 5118 SHAPE B



2216.



2216. Punch with tapered head, stepped, round, ~DIN 5118 Shape B

d ₁ / Order No	d ₂	P	l ₁ / Order No	a	k	r	l (Order Code character)	71 (D)	80 (E)	90 (F)	100 (G)	120 (J)	150 (M)	200 (N)
3 / (1)	4.5	0.8-2.9	8(1) 10(2)	1	3	6.5		●	●	●	●	●		
4 / (2)	5.5	1.0-3.9	8(1) 13(3)	1.5	4	8		●	●	●	●	●		
5 / (3)	7	1.5-4.9	13(3) 19(4)	1.5	4	10		●	●	●	●	●		
6 / (4)	9	1.6-5.9	13(3) 19(4)	1.5	4	10		●	●	●	●	●		
8 / (5)	11	2.5-7.9	19(4) 25(5)	1.5	4	12		●	●	●	●	●		
10 / (6)	14	4.0-9.9	19(4) 25(5)	1.5	4	15		●	●	●	●	●	●	
13 / (7)	17	5.0-12.9	19(4) 25(5)	1.5	4	15		●	●	●	●	●	●	●
16 / (8)	20	8.0-15.9	19(4) 25(5)	1.5	4	15		●	●	●	●	●	●	●
20 / (9)	25	12.0-19.9	19(4) 25(5)	1.5	4	15		●	●	●	●	●	●	●

Material:

HSS

Hardness:

Shaft 62-66 HRC

Head 45-55 HRC

📄 Description of FIBRO materials for tool and die components see at the beginning of Chapter E.

Execution:

Shaft precision ground. Head subsequently hot upset-forged and tempered.

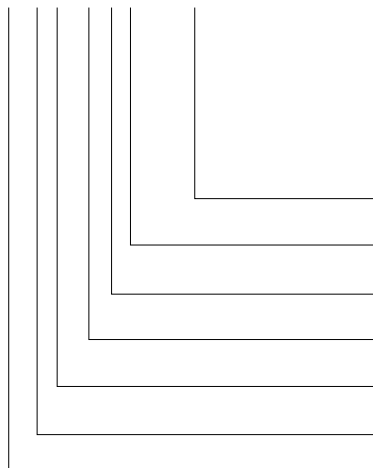
Note:

Matching piloted counterbore 2284.00.

Matching retainer ring 2284.00.01.

Ordering Code (example):

2216.7G4.0720



Shape: round

P = ø7,2 mm

Punch cutting length: l₁
19 mm

Length: l
100 mm

Diameter: d₁
13 mm

Type:
with tapered head

Execution:
round

Punch:
without ejector pin

= 0720

Order No
= (4)

Order Code character
= (G)

Order No
= (7)

Order No
= (6)

Order No
= (1)

= 22