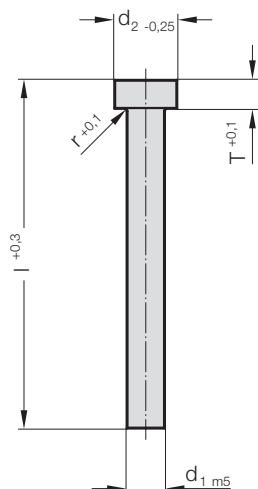


PUNCH, BLANK, ISO 8020

2201.

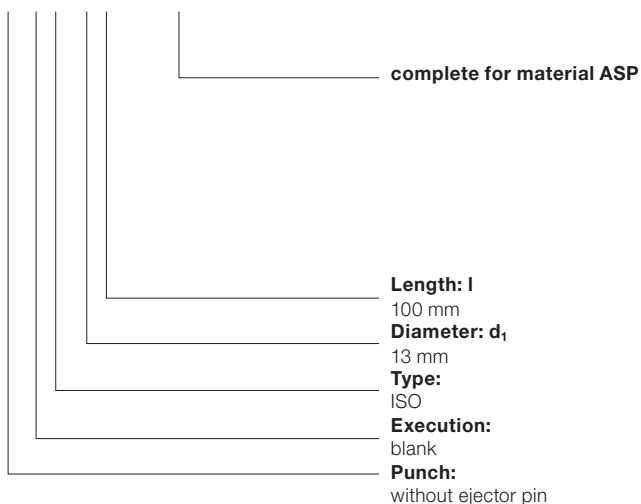


2201. Punch, blank, ISO 8020

d_1 / Order No	d_2	r	T	l / (Order Code character)	71 (D)	80 (E)	90 (F)	100 (G)	120 (J)	150 (M)	200 (N)
3 / (1)	5	0.25	3		●	●	●	●	●		
4 / (2)	6	0.25	3		●	●	●	●	●		
5 / (3)	8	0.3	5		●	●	●	●	●		
6 / (4)	9	0.3	5		●	●	●	●	●		
8 / (5)	11	0.3	5		●	●	●	●	●		
10 / (6)	13	0.3	5		●	●	●	●	●	●	
13 / (7)	16	0.4	5		●	●	●	●	●	●	
16 / (8)	19	0.4	5		●	●	●	●	●	●	●
20 / (9)	23	0.4	5		●	●	●	●	●	●	●
25 / (10)	28	0.4	5		●	●	●	●	●	●	●
32 / (11)	35	0.4	5		●	●	●	●	●	●	●

Ordering Code (example):

2201.7G.ASP



Material:

HSS
 Hardness:
 Shaft 64 ± 2 HRC
 Head 52 ± 5 HRC

ASP 23 - ASP 2023
 upon request

Description of FIBRO materials for tool and die components see at the beginning of Chapter E.

Execution:

Punch head hot upset-forged. Shoulder and shaft fine ground.
 Special dimensions on request.