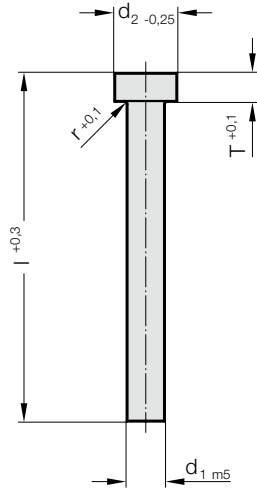


冲头, 毛坯, ISO 8020

2201.

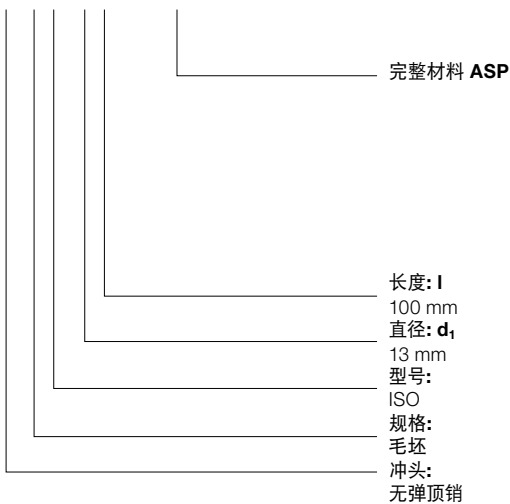


2201. 冲头, 毛坯, ISO 8020

d ₁ / 订购数字	d ₂	r	T	l / (订货字母)	71 (D)	80 (E)	90 (F)	100 (G)	120 (J)	150 (M)	200 (N)
3 / (1)	5	0.25	3		●	●	●	●	●		
4 / (2)	6	0.25	3		●	●	●	●	●		
5 / (3)	8	0.3	5		●	●	●	●	●		
6 / (4)	9	0.3	5		●	●	●	●	●		
8 / (5)	11	0.3	5		●	●	●	●	●		
10 / (6)	13	0.3	5		●	●	●	●	●	●	
13 / (7)	16	0.4	5		●	●	●	●	●	●	
16 / (8)	19	0.4	5		●	●	●	●	●	●	●
20 / (9)	23	0.4	5		●	●	●	●	●	●	●
25 / (10)	28	0.4	5		●	●	●	●	●	●	●
32 / (11)	35	0.4	5		●	●	●	●	●	●	●

订购示例:

2201.7G.ASP



订货字母
= (G)
订购数字
= (7)
订购数字
= (1)
订购数字
= (0)
= 22

材料:

HSS

硬度:

杆部 64 ± 2 HRC

头部 52 ± 5 HRC

ASP 23 - ASP 2023

关于请求

📄 材料说明及其他材质请见E章开头.

结构:

热墩冲头, 支承面和体经过最为精密的磨削。

特别生产请咨询。