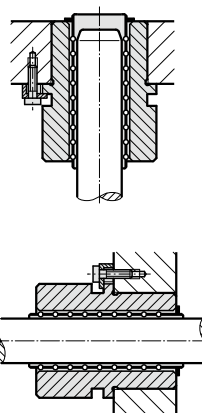
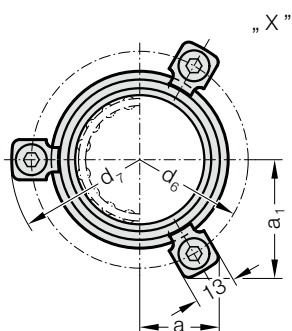
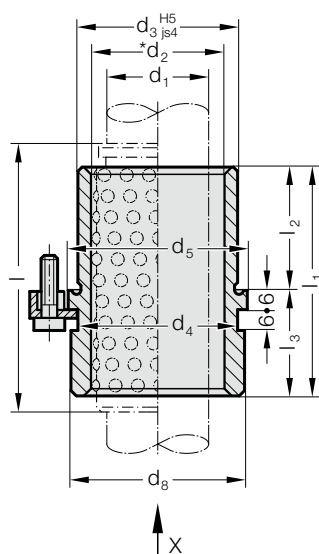


HEADED GUIDE BUSH FOR BALL BEARING, ISO 9448-7

2081.49.

Mounting example



Material:

Tool steel, hardened 62 ± 2 HRC

Execution:

Bearing surfaces honed,
outside diameter precision ground.

Note:

The attachment is with 3 Screw clamp, from $\varnothing d_1 = 38$ with 4 Screw clamp, which are included in delivery (Order No: 207.45 - Screw clamp incl. socket cap screw DIN 6912, Head $\varnothing 13$).

- Notes on ball bearing type guides at the beginning of chapter D.
- * Preloading see pairing classification at the beginning of chapter D
- Matching guide combinations, see selection matrix at the beginning of chapter D.
- Ball guide capacity calculations at the end of chapter D.
- Assembly guide lines / Dimensional requirements and tolerances at the end of chapter D.

Tolerance range:

- yellow = .10
- green = .20
- red = .30

2081.49. Headed guide bush for ball bearing, ISO 9448-7

d ₁	24 25	30 32	38 40	48 50
d ₂	30 31	38 40	46 48	56 58
d ₃	40	48	58	70
d ₄	40	48	58	70
d ₅	48	56	66	80
d ₆	60	67	77	91
d ₇	72.7	79.7	89.7	103.7
d ₈	46	53	63	77
a	22.65	24.4	35.3	40.2
a ₁	33.4	36.4	35.3	40.2
l ₁	55	69	79	96
l ₂	30	37	47	60
l ₃	25	32	32	36
l*	71	80	95	120

*l = Nominal ordering length of ball cage - preferred length

Ordering Code (example):

Headed guide bush for ball bearing, ISO 9448-7	=	2081.49.
Diameter of conduit d ₁	38 mm =	038.
Classification TOL	yellow =	10
Order No	=	2081.49. 038. 10