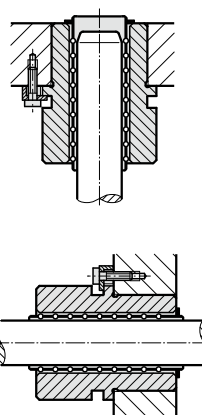
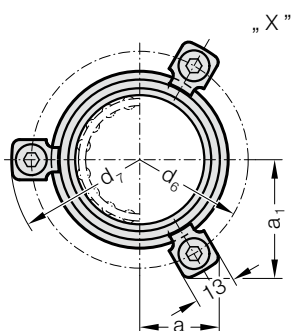
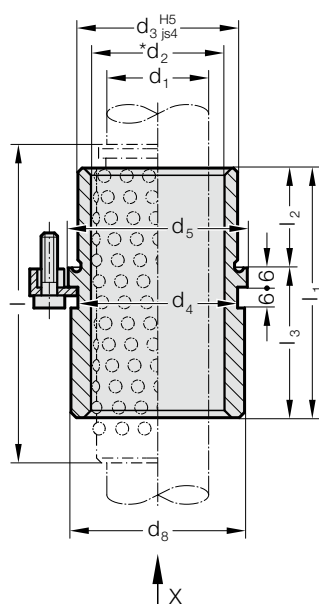


# HEADED GUIDE BUSH FOR BALL BEARING, ISO 9448-7

2081.46.

Mounting example



**Material:**

Tool steel, hardened 62 ± 2 HRC

**Execution:**

Bearing surfaces honed,  
outside diameter precision ground.

**Note:**

The attachment is with 3 Screw clamp, from ø d<sub>1</sub> = 38 with 4 Screw clamp, which are included in delivery (Order No: 207.45 - Screw clamp incl. socket cap screw DIN 6912, Head ø 13).

- ☞ Notes on ball bearing type guides at the beginning of chapter D.
- \*☞ Preloading see pairing classification at the beginning of chapter D
- ☞ Matching guide combinations, see selection matrix at the beginning of chapter D.
- ☞ Ball guide capacity calculations at the end of chapter D.
- ☞ Assembly guide lines / Dimensional requirements and tolerances at the end of chapter D.

Tolerance range:

- yellow = .10
- green = .20
- red = .30

**2081.46. Headed guide bush for ball bearing, ISO 9448-7**

d <sub>1</sub>	19 20	24 25	30 32	38 40	48 50	60 63	80
d <sub>2</sub>	25 26	30 31	38 40	46 48	56 58	68 71	92
d <sub>3</sub>	32	40	48	58	70	85	105
d <sub>4</sub>	32	40	48	58	70	85	105
d <sub>5</sub>	40	48	56	66	80	95	118
d <sub>6</sub>	52	60	67	77	91	106	129
d <sub>7</sub>	64.7	72.7	79.7	89.7	103.7	118.7	141.7
d <sub>8</sub>	39	46	53	63	77	92	115
a	20.7	22.65	24.4	35.3	40.2	45.5	54.5
a <sub>1</sub>	30	33.4	36.4	35.3	40.2	45.5	54.5
l <sub>1</sub>	43	59	75	82	97	116	120
l <sub>2</sub>	23	23	30	37	47	60	60
l <sub>3</sub>	20	36	45	45	50	56	60
l*	56	71	95	105	120	140	140

\*l = Nominal ordering length of ball cage - preferred length

**Ordering Code (example):**

Headed guide bush for ball bearing, ISO 9448-7	=	2081.46.
Diameter of conduit d <sub>1</sub>	38 mm =	038.
Classification TOL	yellow =	10
Order No	=	2081.46. 038. 10