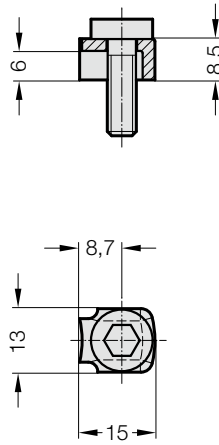


压板 包括 螺钉



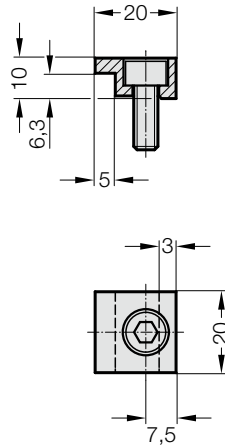
207.45



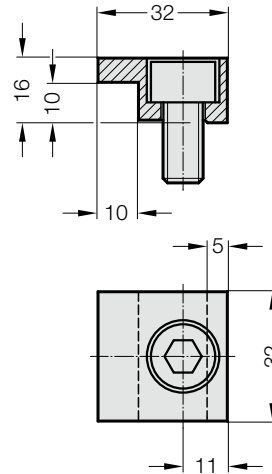
压板  
包括 螺钉  
- 钢质冲压弯件  
- 夹紧高度 6 - 6.3 mm  
- 螺栓 M6



2072.45.10



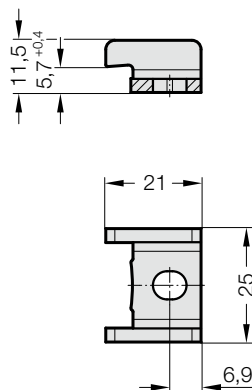
2072.45.16



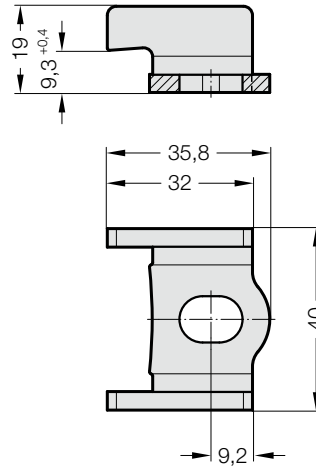
压板  
包括 螺钉  
2072.45.10  
- 钢质,经过磨铣  
- 夹紧高度 6 - 6.3 mm  
- 螺栓 M6  
2072.45.16  
- 钢质,经过磨铣  
- 夹紧高度 10 mm  
- 螺栓 M10



2072.45.55.12



2072.45.55.14



固定件  
无螺栓  
2072.45.55.12  
- 钢板  
- 夹紧高度 6 - 6.3 mm  
- 螺栓 M6  
2072.45.55.14  
- 钢板  
- 夹紧高度 10 mm  
- 螺栓 M10