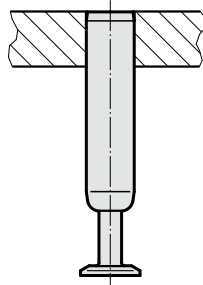


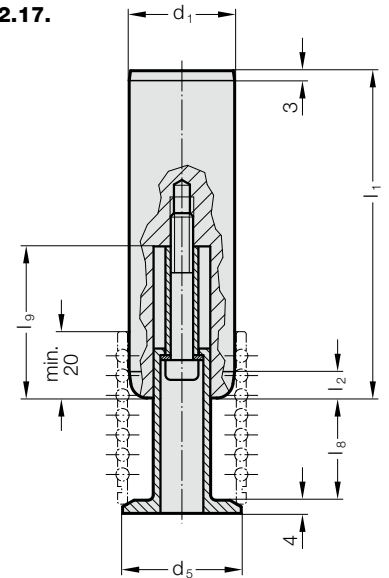
# 导向柱带笼固定架



安装示例



202.17.



**材料:**

钢, (核抗张强度:  $\geq 900 \text{ N/mm}^2$ ) 表层硬化处理  
表面硬度:  $60 + 3 \text{ HRC}$ , 淬火深度  $\geq 1,8 \text{ mm}$

**结构:**

精磨, 微抛光

**说明:**

- ☞ 预负载 见D章开始处的分类表。
  - ☞ 匹配连接请见D章开始的矩阵表格。
  - ☞ 安装说明/尺寸及公差要求见D章最后。
- 球锁固定座尺寸见202.91.

**公差范围:**

- 黄色 = .10
- 绿色 = .20
- 红色 = .30

202.17. 导向柱带笼固定架

$d_1$	38	40	48	50	60	63
$d_5$	42	44	52	54	64	67
$l_2$	6	6	8	8	8	8
KG ( $l_8 / l_9$ )						
1 (31/46)	●	●	●	●	●	●
2 (41/56)	●	●	●	●	●	●
3 (51/66)	●	●	●	●	●	●
4 (61/76)	●	●	●	●	●	●
5 (73/89)	●	●	●	●	●	●
$l_1$						
160	●	●				
180	●	●	●	●		
200	●	●	●	●		
224	●	●	●	●		
250	●	●	●	●	●	●
280	●	●	●	●	●	●
315	●	●	●	●	●	●
355	●	●	●	●	●	●
400	●	●	●	●	●	●
450	●	●	●	●	●	●
500	●	●	●	●	●	●
550	●	●	●	●	●	●
600	●	●	●	●	●	●
700	●	●	●	●	●	●
800	●	●	●	●	●	●

订购示例:

导向柱带笼固定架	=	202.17.
导向装置直径 $d_1$	48 mm =	048.
长度 $l_1$	550 mm =	550.
笼形支架尺寸 KG	1 =	1.
分类 TOL	黄色 =	10
订购编号	=	202.17. 048. 550. 1. 10