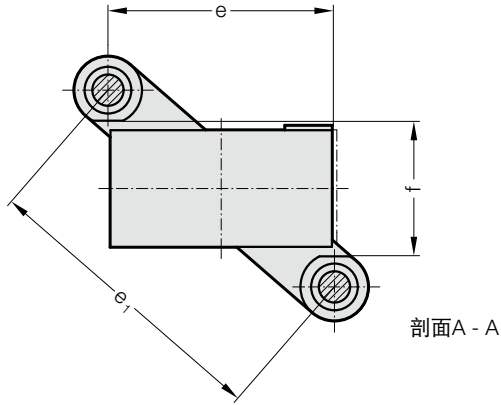
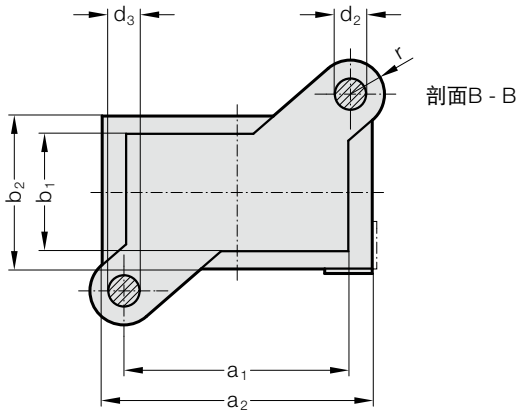
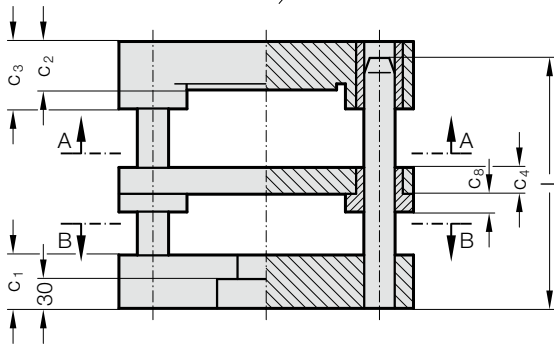


导柱模架

201.23.



剖面A - A



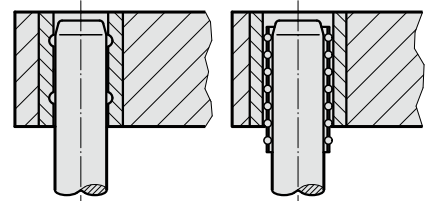
剖面B - B



导向方式

碳氮共渗烧结构

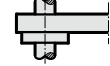
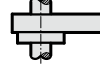
滚珠导向



间隔板

钢

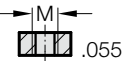
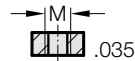
钢



订购号，第2部分
可选择上部轴颈
带有或不带有螺纹

.034

.054



201.23. 导柱模架

订购编号第1部分*	工作面		b ₂	C ₁	C ₂	C ₃	C ₄	C ₈	d ₂	d ₃	e	e ₁	f	l	r	M
	a ₁ x b ₁	a ₂														
201.23.100.080.□□□□□□	100 x 80	140	120	50	30	50	22	15	25	24	100	175	98	160 - 500	30	20x1.5
201.23.125.100.□□□□□□	125 x 100	165	140	50	40	60	22	15	25	24	125	206	118	160 - 500	30	24x1.5
201.23.160.100.□□□□□□	160 x 100	200	140	50	40	60	22	15	25	24	160	229	118	160 - 500	30	24x1.5
201.23.160.125.□□□□□□	160 x 125	200	165	56	40	60	27	15	32	30	160	259	148	180 - 500	37	24x1.5
201.23.200.125.□□□□□□	200 x 125	240	165	56	40	60	27	15	32	30	200	286	148	180 - 500	37	24x1.5
201.23.250.160.□□□□□□	250 x 160	290	200	56	50	70	27	15	32	30	250	346	184	200 - 500	37	30x2

*订购编号第2部分 = 补充导向类型和导向柱型号/长度
 □□□□□□ 订购示例参见 A 章的开头铸造立柱式支架