

5355-5370

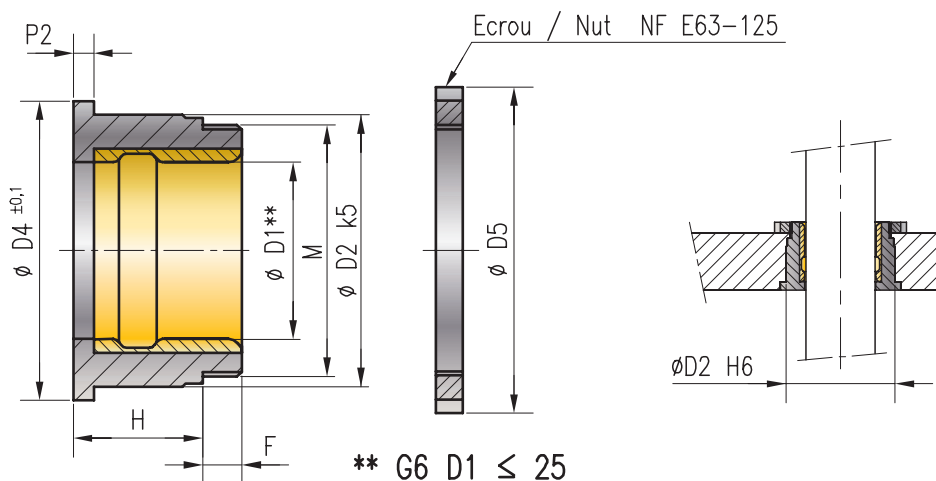
**BAGUE «BRONZACIER»
EPAULEE FILTEE**
DEMOUNTABLE BRONZE
LINED STEEL STRIPPER BUSH

REF. 5355 D1=32 H=24 → 5355-32-24
REF. 5370 D1=32 H=24 → 5370-32-24

NF E 63-123



Ensemble / Set REF. 5355



** G6 D1 ≤ 25
G5 D1 > 25

REF. 5370

REF. 5371

D2	28	32	40	50	63	80	
M	M27 x 1	M30 x 1	M39 x 1	M48 x 1	M60 x 1	M76 x 1	
D4	32	36	45	55	70	90	
D5	40	44	55	65	81	100	
P2	3	3	3	4	4	5	
F	5	6	7	7	8	10	
H	D1	16	20	25	32	40	50
	15						
	19						
	24						
	31						
	39						

REF. 5371

D1	16	20	25	32	40	50
D5	40	44	55	65	81	100
REF. 5371						

INTERCHANGEABILITÉ DES BAGUES SINT-GR AVEC LES BAGUES «BRONZACIER» ET «LUBRACIER»



Les bagues SINT-GR remplacent en lieu et place les bagues «Bronzacier» et «Lubracier» :
 Gamme des «bronzacier» + gamme des «lubracier» = gamme des bagues SINT-GR

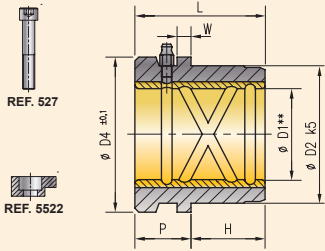
“BRONZACIER”

“LUBRACIER”

SINT-GR AVEC REVÊTEMENT SINTER

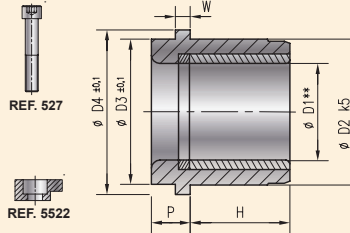
CORRESPONDANCE ENTRE LES BAGUES COURTES

Ensemble / Assembly REF. 5353



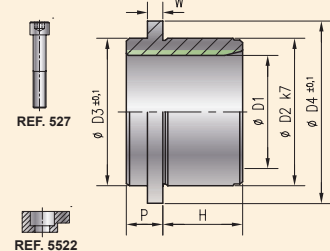
** G6 D1 ≤ 25
 G5 D1 > 25
REF. 5357

Ensemble / Assembly REF. 5363



** G6 D1 ≤ 25
 G5 D1 > 25
REF. 5367

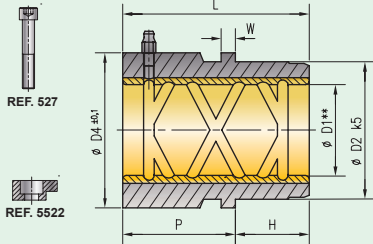
Ensemble / Set REF. 5343



REF. 5347

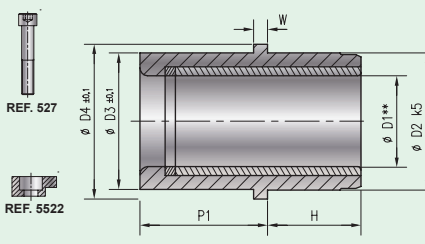
CORRESPONDANCE ENTRE LES BAGUES LONGUES

Ensemble / Assembly REF. 5354



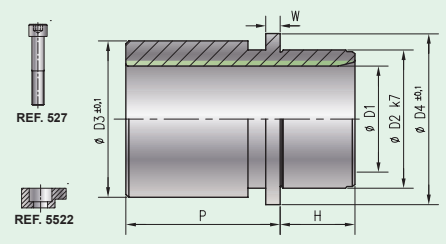
** G6 D1 ≤ 25
 G5 D1 > 25
REF. 5358

Ensemble / Assembly REF. 5364



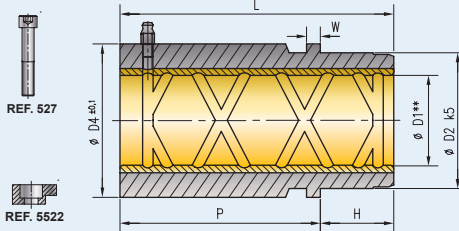
** G6 D1 ≤ 25
 G5 D1 > 25
REF. 5368

Ensemble / Set REF. 5344



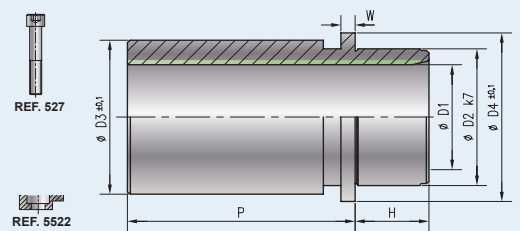
CORRESPONDANCE ENTRE LES BAGUES EXTRA LONGUES

Ensemble / Assembly REF. 5356



** G6 D1 ≤ 25
 G5 D1 > 25
REF. 5359

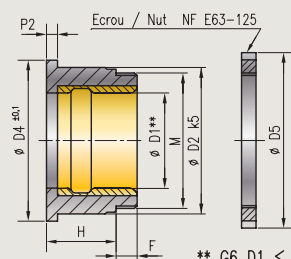
Ensemble / Set REF. 5346



REF. 5349

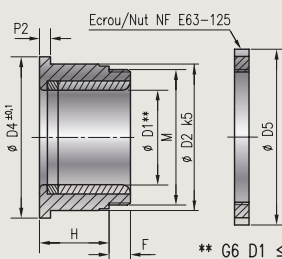
CORRESPONDANCE ENTRE LES BAGUES FILETÉES

Ensemble / Assembly REF. 5355



** G6 D1 ≤ 25
 G5 D1 > 25

Ensemble / Assembly REF. 5365



** G6 D1 ≤ 25
 G5 D1 > 25

Ensemble / Set REF. 5345

