



**Sealtite HCI 316 black:  
Robust, wide temperature range and  
superior corrosion resistant.**

The ultimate corrosion resistant Sealtite conduit is type HCI 316. In addition type HCI 316 has a stainless steel AISI-316 square-locked inner hose which guarantees a superior corrosion resistance. Type HCI 316 can be used in areas where strong temperature changes occur and extreme corrosion resistance is needed and is among others, being applied in the food industry, transformers, off-shore, foundries, chemical and ceramics industry.

**Material & Construction:**

**Construction:** Stainless steel (AISI-316), square-locked with cord packing, thick smooth thermoplastic cover (PVC compound).

**Cover specifications:** PVC, lead-free according to RoHS, sunlight and UV resistant, suitable for outside installation.



The cover is good resistant against oil and grease.

**Temperature:** -45 °C to +105 °C, intermittent up to +120 °C.

**Colour:** Black.

**Classification according NEN-EN-IEC 61386:**

**Compression resistance:** Class 4, Heavy (1250 N).

**Impact resistance:** Class 4, Heavy (6 J).

**Tensile strength:** Class 4, Heavy (1000 N).

**Protection class:** IP 67 (dust-proof, water-tight).

**ANACONDA  
SEALTITE®  
SPECIAL**

**CONDUIT  
TYPE HCI 316  
BLACK**



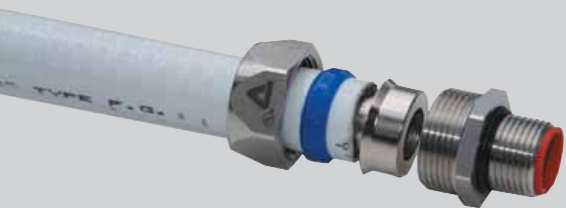
Square locked

Sealtite	Diametre		Bending radius		Standard carton		Small carton		Reels		Weight (Kg/m)
	Size (Inch)	Inside (mm)	Outside (mm)	Static (mm)	Dynamic (mm)	Metre	Article No.	Metre	Article No.	Metre	
						<b>Black</b>		<b>Black</b>		<b>Black</b>	
3/8"	12,6	17,8	60	85	30	319.012.1	10	319.012.3	-	-	0,3
1/2"	16,0	21,1	75	110	30	319.016.1	10	319.016.3	-	-	0,4
3/4"	21,0	26,4	90	140	30	319.020.1	10	319.020.3	-	-	0,6

The AISI-316 stainless steel fittings for Sealtite are outlined on page 6-10.



Size Sealtite	Inch	1/4"	5/16"	3/8"	1/2"	3/4"	1"	1 1/4"	1 1/2"	2"	2 1/2"	3"	4"
Fittings	ISO	M12-M16	M16-M20	M16-M20	M20	M25	M32	M40	M50	M63	M75	M90	M105
	PG	7	9 - 11	11 - 13,5	16	21	29	36	42	48	-	-	-
	NPT	-	-	1/2"	1/2"	3/4"	1"	1 1/4"	1 1/2"	2"	2 1/2"	3"	4"



## Anaconda stainless steel AISI-316 fittings for Anaconda Sealtite.

The stainless steel AISI-316 Anaconda fittings can be used with all types of Anaconda Sealtite (except CNP) and offer the highest corrosion resistance. These stainless steel Anaconda fittings are mostly used in the off-shore, chemical and food industry. Because of the UL & CSA approvals the fittings are also suitable for export projects outside Europe.

### Material & Construction:

**Construction:** Stainless steel (AISI-316) fitting, consisting of 4 parts (counter nut, clamping ring, ferrule and body).

**Material:** Counter nut and body are stainless steel (AISI-

316) and the ferrule is from nickel plated brass. Clamping ring and insert are from PA6 (red for ISO metric and white for NPT).

**Special approvals:** UL-514B and CSA C 22.2 (combined UL/CSA file # E 234207).

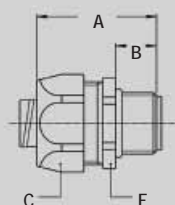
Suitable for use in hazardous environments according NEC 501-4B Class I, Division 2; Class II, Division 1 and 2; Class III, Division 1 and 2.

**Temperature:** -45 °C till +105 °C continuous.

**Protection class:** IP 67 (dust-proof, water-tight).

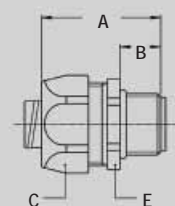
**Colour:** Metal.

### ISO straight fitting, male, stainless steel (AISI-316).



Thread	Sealtite Size (inch)	Min. Internal Bore (mm)	Dimensions in mm					Standard Package	Article Number	Weight (Kg/100)
			A	B	C	D	E			
M16 x 1,5	3/8"	10,2	35	12	27	-	24	50	812.116.9	4,8
M20 x 1,5	1/2"	13,9	37	13	30	-	27	50	812.120.9	5,9
M25 x 1,5	3/4"	18,5	40	15	36	-	36	25	812.125.9	7,9

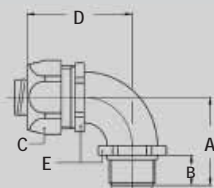
### NPT straight fitting, male, stainless steel (AISI-316).



Thread	Sealtite Size (inch)	Min. Internal Bore (mm)	Dimensions in mm					Standard Package	Article Number	Weight (Kg/100)
			A	B	C	D	E			
1/2" NPT	3/8"	10,2	37	13	27	-	24	50	814.112.9	5,6
1/2" NPT	1/2"	13,9	37	13	30	-	27	50	814.116.9	6,2
3/4" NPT	3/4"	18,5	40	15	36	-	36	25	814.120.9	8,9



NPT 90° fitting, male, stainless steel (AISI-316).



Thread	Sealtite Size (inch)	Min. Internal Bore (mm)	Dimensions in mm					Standard Package	Article Number	Weight (Kg/100)
			A	B	C	D	E			
1/2" NPT	3/8"	10,2	36	13	27	43	22	50	814.512.9	13,3
1/2" NPT	1/2"	13,9	36	13	30	43	27	50	814.516.9	14,6
3/4" NPT	3/4"	18,5	43	15	36	48	33	25	814.520.9	22,0

Lock nuts, stainless steel (AISI-316), ISO.



Thread	Sealtite Size (inch)	Min. Internal Bore (mm)	Dimensions in mm					Standard Package	Article Number	Weight (Kg/100)
			A	B	C	D	E			
M16 x 1,5	-	-	-	-	-	-	-	50	880.116.8	-
M20 x 1,5	-	-	-	-	-	-	-	50	880.120.8	-
M25 x 1,5	-	-	-	-	-	-	-	25	880.125.8	-

Lock nuts, stainless steel (AISI-316), NPT.



Thread	Sealtite Size (inch)	Min. Internal Bore (mm)	Dimensions in mm					Standard Package	Article Number	Weight (Kg/100)
			A	B	C	D	E			
NPT 1/2"	-	-	-	-	-	-	-	50	880.216.8	-
NPT 3/4"	-	-	-	-	-	-	-	50	880.220.8	-

Grounding ferrule, stainless steel (AISI-316).



Thread	Sealtite Size (inch)	Min. Internal Bore (mm)	Dimensions in mm					Standard Package	Article Number	Weight (Kg/100)
			A	B	C	D	E			
-	3/8"	10,2	-	-	-	-	-	25	815.011.9	-
-	1/2"	13,9	-	-	-	-	-	25	815.016.9	-
-	3/4"	18,5	-	-	-	-	-	25	815.021.9	-

ANACONDA  
SEALTITE®  
SPECIAL

LIQUID-TIGHT  
FITTINGS FOR  
SEALTITE  
IP 67