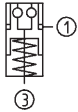


No. 6206ILA

Installation clamping module with indexing

Pneumatic opening.
 Pneumatic blow-out.
 Opening operating pressure:
 K10.3 min. 5 bar - max. 12 bar.
 K20.3 min. 4.5 bar - max. 12 bar.
 Retensioning operating pressure > min. 5 bar / max. 6 bar.
 Cover and piston hardened.
 Repetition accuracy < 0.005 mm.



Order no.	Size	Pull-in/locking force up to [kN]	Holding force* [kN]	Blow out	Weight [Kg]
428771	K10.3	10	25	●	1,4
428797	K20.3	17	55	●	2,6

Application:

Zero-point clamping system for set-up-time-optimised clamping during cutting and non-cutting machining.
 The indexing function of the clamping module prevents the pallet from twisting, enabling exact positioning every 90°.

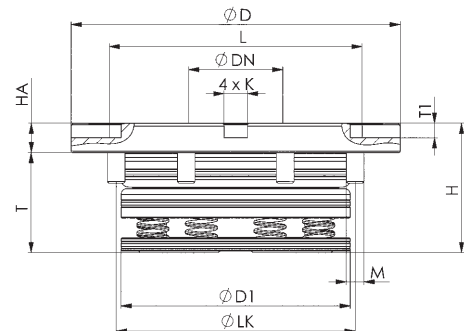
Note:

The installation clamping module has high holding, pull-in and locking forces. This is opened pneumatically (1) and mechanically locked through spring force. Subsequent uncoupling of the pressure lines is possible at all times (module is tensioned pressure-free).
 The clamping module with blow-out and support control has two connections: 1x opening (1), 1x pneum. blow-out and support control (3). (The pneumatic blow-out and support control can optionally be connected.)
 * Please observe the installation instructions.

On request:

- Installation diagrams

ZERO-POINT CLAMPING FROM 4.5 BAR



Dimensions:

Order no.	Size	dia. D	dia. DN	dia. D1	H	HA	K F6	L	dia. LK	M	T	T1
428771	K10.3	112	22	78	35	10	8	100	88	6xM6	25	5
428797	K20.3	138	32	102	49	15	10	108	115	8xM6	34	5

