

## No. 6994-01

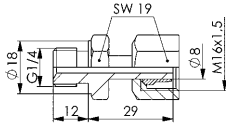
### Screw-in fitting, straight, heavy-duty

for steel tubes with outer diameter 8 mm and internal diameter 4 mm, with olive ring.



CAD

Order no.	Article no.	max. operating pressure [bar]	Weight [g]
160184	6994-01	630	50



#### Design:

To DIN 3852 form B by sealing edge or by sealing edge ring and olive ring or O-ring.

#### Note:

Warning: Do not use Teflon tape!

## No. 6994-02

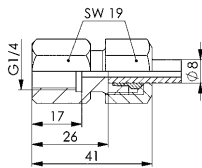
### Screw-up fitting, straight, heavy-duty

for steel tubes with outer diameter 8 mm and internal diameter 4 mm, with olive ring.



CAD

Order no.	Article no.	max. operating pressure [bar]	Weight [g]
160192	6994-02	630	60



#### Design:

To DIN 3852 form B by sealing edge or by sealing edge ring and olive ring or O-ring.

#### Note:

Warning: Do not use Teflon tape!

## No. 6994-03

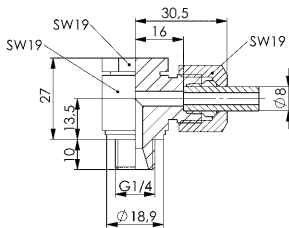
### Pivoting fitting, angled, heavy-duty

for steel tubes with outer diameter 8 mm and internal diameter 4 mm, with olive ring.



CAD

Order no.	Article no.	max. operating pressure [bar]	Md max. [Nm]	Weight [g]
160358	6994-03	500	50	103



#### Design:

To DIN 3852 form B by sealing edge or by sealing edge ring and olive ring or O-ring.

#### Note:

Warning: Do not use Teflon tape!

## No. 6994-04

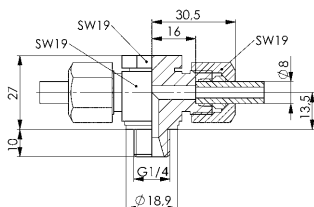
### Pivoting T-fitting, heavy-duty

for steel tubes with outer diameter 8 mm and internal diameter 4 mm, with olive ring.



CAD

Order no.	Article no.	max. operating pressure [bar]	Md max. [Nm]	Weight [g]
170266	6994-04	500	50	122



#### Design:

To DIN 3852 form B by sealing edge or by sealing edge ring and olive ring or O-ring.

#### Note:

Warning: Do not use Teflon tape!

## No. 6994-05

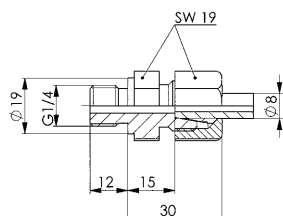
### Screw-in fitting, straight, heavy-duty

for steel tubes with outer diameter 8 mm and internal diameter 4 mm, with olive ring.



CAD

Order no.	Article no.	max. operating pressure [bar]	Weight [g]
175323	6994-05	630	55



#### Design:

To DIN 3852 form B by sealing edge or by sealing edge ring and olive ring or O-ring.

#### Note:

Warning: Do not use Teflon tape!