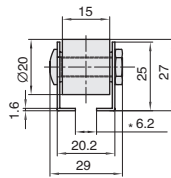
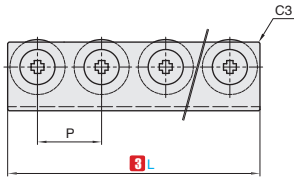
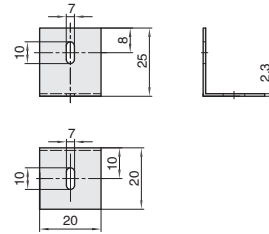


①代号	类型	轮距	M材质				S表面处理			
			滚轮	螺丝-螺帽	轴承	支架	框架	滚轮	螺丝-螺帽	支架
TUASX	无支架	P=25	钢	钢	—	—	碳钢镀锌	—	—	
TUBSX		P=30								
TUCSX		P=35								
TCLASS	有支架	P=25	不锈钢	—	钢	—	—	碳钢镀锌	—	
TLBSS		P=30								
TLCSS		P=35								

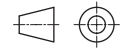


△槽宽尺寸为6.2<sup>±0.2</sup>

支架 (×4个)  
! 可通过追加加工选择支架型。



△支架安装方法  
拆下要安装支架部分的2个螺帽，  
用附属支架与附属螺丝进行安装。



视角标准：第一视角



①代号	-	②轮数量	-	③L
TUASX	-	2	-	L48
TLBSS	-	2	-	L88

①代号	②轮数量	③L		
		P=25	P=30	P5=35
无支架型 TUASX TUBSX TUCSX 带支架型 TCLASS TLBSS TLCSS	2	(48)	(58)	(68)
	3	(73)	(88)	(103)
	4	(98)	(118)	(138)
	5	(123)	(148)	(173)
	6	(148)	(178)	(208)
	7	(173)	(208)	(243)
	8	(198)	(238)	(278)
	9	(223)	(268)	(313)
	10	(248)	(298)	(348)
	11	(273)	(328)	(383)
	12	(298)	(358)	(418)
	13	(323)	(388)	(453)
	14	(348)	(418)	(488)
	15	(373)	(448)	(523)
	16	(398)	(478)	(558)
	17	(423)	(508)	(593)
	18	(448)	(538)	(628)
	19	(473)	(568)	(663)
	20	(498)	(598)	(698)
	21	(523)	(628)	(733)
	22	(548)	(658)	(768)
	23	(573)	(688)	(803)
	24	(598)	(718)	(838)
	25	(623)	(748)	(873)
	26	(648)	(778)	(908)
	27	(673)	(808)	(943)
	28	(698)	(838)	(978)
	29	(723)	(868)	(1013)
	30	(748)	(898)	(1048)
	31	(773)	(928)	(1083)
	32	(798)	(958)	(1118)
	33	(823)	(988)	(1153)

每个滚轮的耐载荷

滚轮材质	耐载荷
钢-不锈钢	30kgf(294N)