

No. 6974

## Centring clamp MAXI with two clamping points

Double-acting,  
max. operating pressure 350 bar,  
min. operating pressure 10 bar.



Order no.	Article no.	Clamping force at 100 bar* [kN]	Clamping force at 350 bar* [kN]	Clamping points	Clamping $\varnothing$ N -1	Stroke H [mm]	Repeatability [mm]	Q max. [l/min]	Weight [g]
328799	6974-2054	3,2	11,2	2	54-62	4,0	$\pm 0,02$	1,0	1754
328831	6974-2061	3,2	11,2	2	61-69	4,0	$\pm 0,02$	1,0	1754
328864	6974-2068	3,2	11,2	2	68-76	4,0	$\pm 0,02$	1,0	1754
327619	6974-2076	5,0	17,5	2	76-84	5,2	$\pm 0,02$	1,5	1754
328872	6974-2083	5,0	17,5	2	83-91	5,2	$\pm 0,02$	1,5	1754
328914	6974-2090	5,0	17,5	2	90-98	5,2	$\pm 0,02$	1,5	1754
329029	6974-2098	8,0	28,0	2	98-109	6,9	$\pm 0,02$	2,0	3434
329060	6974-2109	8,0	28,0	2	109-120	6,9	$\pm 0,02$	2,0	3597
329102	6974-2119	8,0	28,0	2	119-130	6,9	$\pm 0,02$	2,0	3761

\* The clamping force is distributed centrally over the 2 clamping points.

### Design:

Double-acting centring clamp with two clamping points.  
All components from high-grade hardened and nitrided steel. Oil supply via oil channel in fixture body.

### Application:

For centring and clamping workpieces with machined or cast holes, cutouts or penetrations.  
Element screwed directly onto the fixture body, sealed with O-ring.

### Features:

The centring clamp is fastened from below; oil is supplied through drilled channels in the fixture body. If the centring clamp is fastened from above and oil supplied through conduits drilled in the fixture body, a connection plate for O-ring connection is needed. If the centring clamp is fastened from above and oil supplied through pipes, a connection plate for pipe connection is needed. Pressure pieces are replaceable.

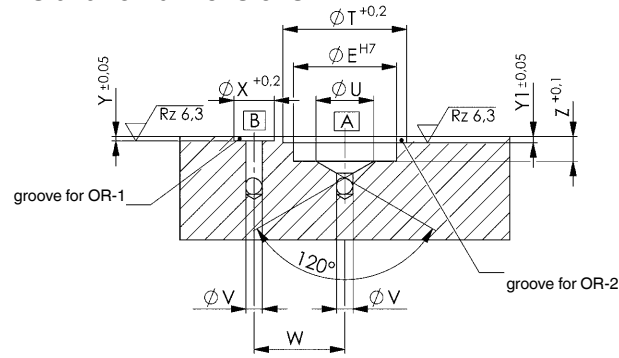
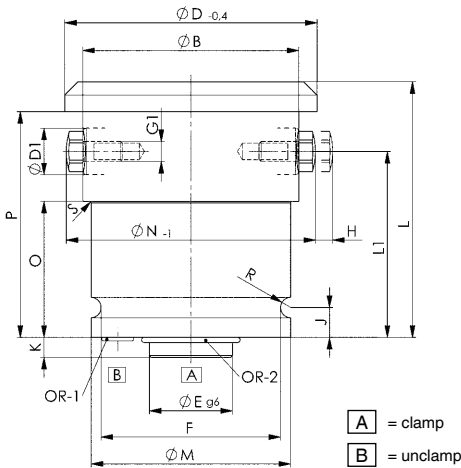
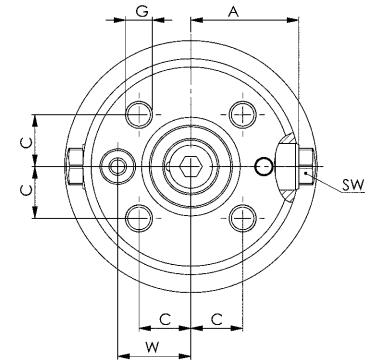
### Note:

The practical combination of 2-point and 3-point elements can avoid over-determined clamping states. Unsuitable for use on lathes.

### On request:

Other sizes available on request.

### Installation dimensions:



### Dimensions:

Order no.	Article no.	A	dia. B	C	dia. D -0,4	Bolt $\varnothing$ D1 [mm]	dia. E g6/h7	F	G	G1	J	K	L	L1	dia. M	O	P	R	S	SW	dia. T	dia. U	dia. V	W	dia. X	Y	Y1	Z	OR-1 O-ring Order No.	OR-2 O-ring Order No.
328799	6974-2054	22,9	45	11,3	53,9	12	16	40	M6x12	M6	8	6	65,0	45	45	0	57,0	2,6	0	10	20,5	8	3	16,8	7,7	1,1	1,3	6	409508	537985
328831	6974-2061	22,9	45	11,3	60,9	12	16	40	M6x12	M6	8	6	65,0	45	45	0	57,0	2,6	0	10	20,5	8	3	16,8	7,7	1,1	1,3	6	409508	537985
328864	6974-2068	22,9	45	11,3	67,9	12	16	40	M6x12	M6	8	6	65,0	45	45	0	57,0	2,6	0	10	20,5	8	3	16,8	7,7	1,1	1,3	6	409508	537985
327619	6974-2076	32,5	65	15,6	75,9	14	25	54	M8x16	M6	9	6	77,0	56	60	41	68,0	3,1	0,5	11	30,0	14	4	22,0	9,8	1,1	1,5	6	537969	321265
328872	6974-2083	32,5	65	15,6	82,9	14	25	54	M8x16	M6	9	6	77,0	56	60	41	68,0	3,1	0,5	11	30,0	14	4	22,0	9,8	1,1	1,5	6	537969	321265
328914	6974-2090	32,5	65	15,6	89,9	14	25	54	M8x16	M6	9	6	77,0	56	60	41	68,0	3,1	0,5	11	30,0	14	4	22,0	9,8	1,1	1,5	6	537969	321265
329029	6974-2098	42,5	85	19,1	97,9	18	32	67	M10x20	M8	10	6	91,0	64	74	47	80,0	3,6	2,5	13	36,6	16	5	27,0	10,8	1,1	1,3	6	542464	542308
329060	6974-2109	42,5	85	19,1	108,9	18	32	67	M10x20	M8	10	6	91,0	64	74	47	80,0	3,6	2,5	13	36,6	16	5	27,0	10,8	1,1	1,3	6	542464	542308
329102	6974-2119	42,5	85	19,1	118,9	18	32	67	M10x20	M8	10	6	91,0	64	74	47	80,0	3,6	2,5	13	36,6	16	5	27,0	10,8	1,1	1,3	6	542464	542308

Subject to technical alterations.