

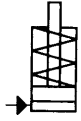
No. 6924

Built-In Cylinder

single acting, spring return,
max. operating pressure 400 bar.



CAD



| Order no. | Article no. | Push force at 100 bar [kN] | Push force at 400 bar [kN] | Stroke H [mm] | Vol. [cm ³] | Piston dia. [mm] | Piston area [cm ²] | Spring force min. [N] | Weight [g] |
|-----------|-------------|-------------------------------|-------------------------------|------------------|----------------------------|---------------------|-----------------------------------|--------------------------|---------------|
| 63024 | 6924-05 | 1,1 | 4,5 | 6 | 0,66 | 12 | 1,1 | 45 | 300 |
| 63099 | 6924-08 | 2,0 | 8,0 | 6 | 1,20 | 16 | 2,0 | 60 | 270 |
| 63115 | 6924-12 | 3,0 | 12,0 | 8 | 2,50 | 20 | 3,1 | 95 | 480 |
| 63131 | 6924-20 | 5,0 | 20,0 | 8 | 4,00 | 25 | 4,9 | 205 | 500 |
| 63164 | 6924-32 | 8,0 | 32,0 | 10 | 8,00 | 32 | 8,0 | 340 | 850 |
| 63156 | 6924-50 | 12,5 | 50,0 | 12 | 15,00 | 40 | 12,5 | 400 | 1450 |
| 63180 | 6924-70 | 17,5 | 70,0 | 15 | 27,00 | 48 | 18,0 | 650 | 2050 |

Design:

Cylinder from steel, burnished. Piston and piston rod case hardened and ground. Built-in return spring, sintered bronze breather. Wiper at piston rod. Cylinder barrel with metric fine thread for locknuts to DIN 70852. Oil supply via threaded port.

Application:

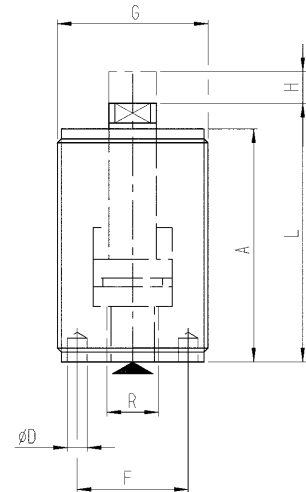
Suitable for converting mechanical to hydraulic clamping devices. The built-in cylinder is inserted through holes and counter screwed at both ends with grooved nuts. General-purpose clamping element for clamping, pushing, pressing, riveting and punching.

Features:

The metric thread extending over the whole length of the cylinder permits with its two flange nuts DIN 70852 lengthwise adjustment over a large range and fast positioning in the required by two flange nuts. Fast attachment of fixture elements and thrust pieces the piston thread.

Note:

For single acting cylinder types there is a risk of sucking coolant liquid at the return stroke. In this case the cylinder has to be protected against the direct effect of coolant. The built in sinter metal breather should be protected.



Dimensions:

| Order no. | Article no. | A | dia. D | dia. E | F | G | K x depth | L | S | R |
|-----------|-------------|------|--------|--------|----|---------|-----------|-------|----|------|
| 63024 | 6924-05 | 50,0 | 4 | 8 | 20 | M30x1,5 | M4x10 | 56,0 | 6 | G1/8 |
| 63099 | 6924-08 | 46,5 | 4 | 10 | 20 | M32x1,5 | M5x12 | 52,5 | 8 | G1/8 |
| 63115 | 6924-12 | 59,0 | 5 | 12 | 28 | M38x1,5 | M6x14 | 65,5 | 9 | G1/4 |
| 63131 | 6924-20 | 63,5 | 4 | 12 | 25 | M40x1,5 | M8x20 | 70,5 | 10 | G1/4 |
| 63164 | 6924-32 | 72,0 | 4 | 16 | 30 | M48x1,5 | M10x25 | 81,0 | 13 | G1/4 |
| 63156 | 6924-50 | 80,0 | 5 | 20 | 35 | M60x1,5 | M12x28 | 89,0 | 17 | G1/4 |
| 63180 | 6924-70 | 93,0 | 6 | 25 | 44 | M70x1,5 | M16x35 | 105,0 | 22 | G1/4 |

